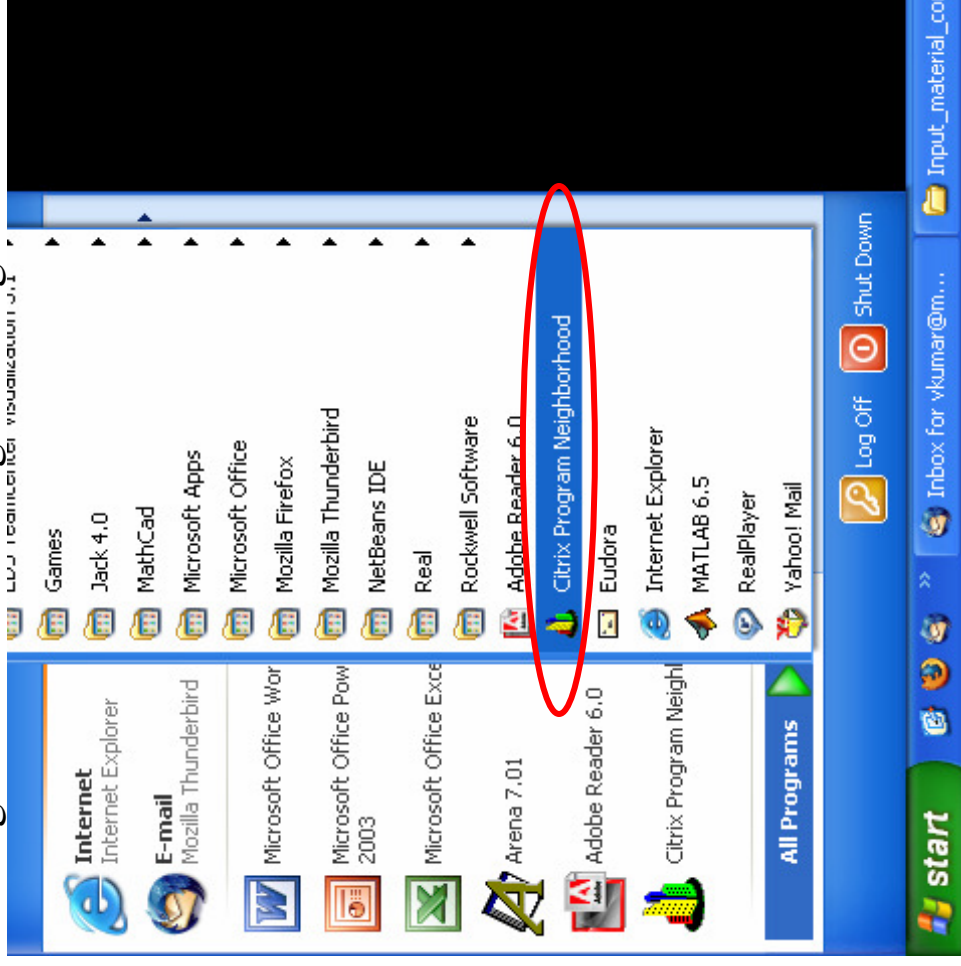
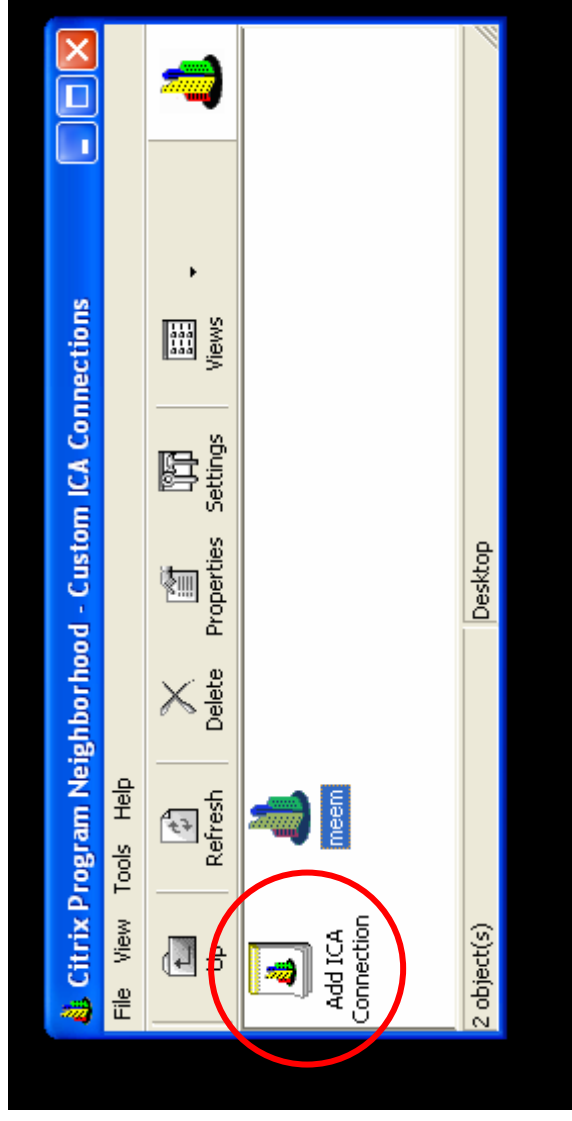


## Installing and Running the software

- Go to START > All Programs > Citrix Program Neighborhood



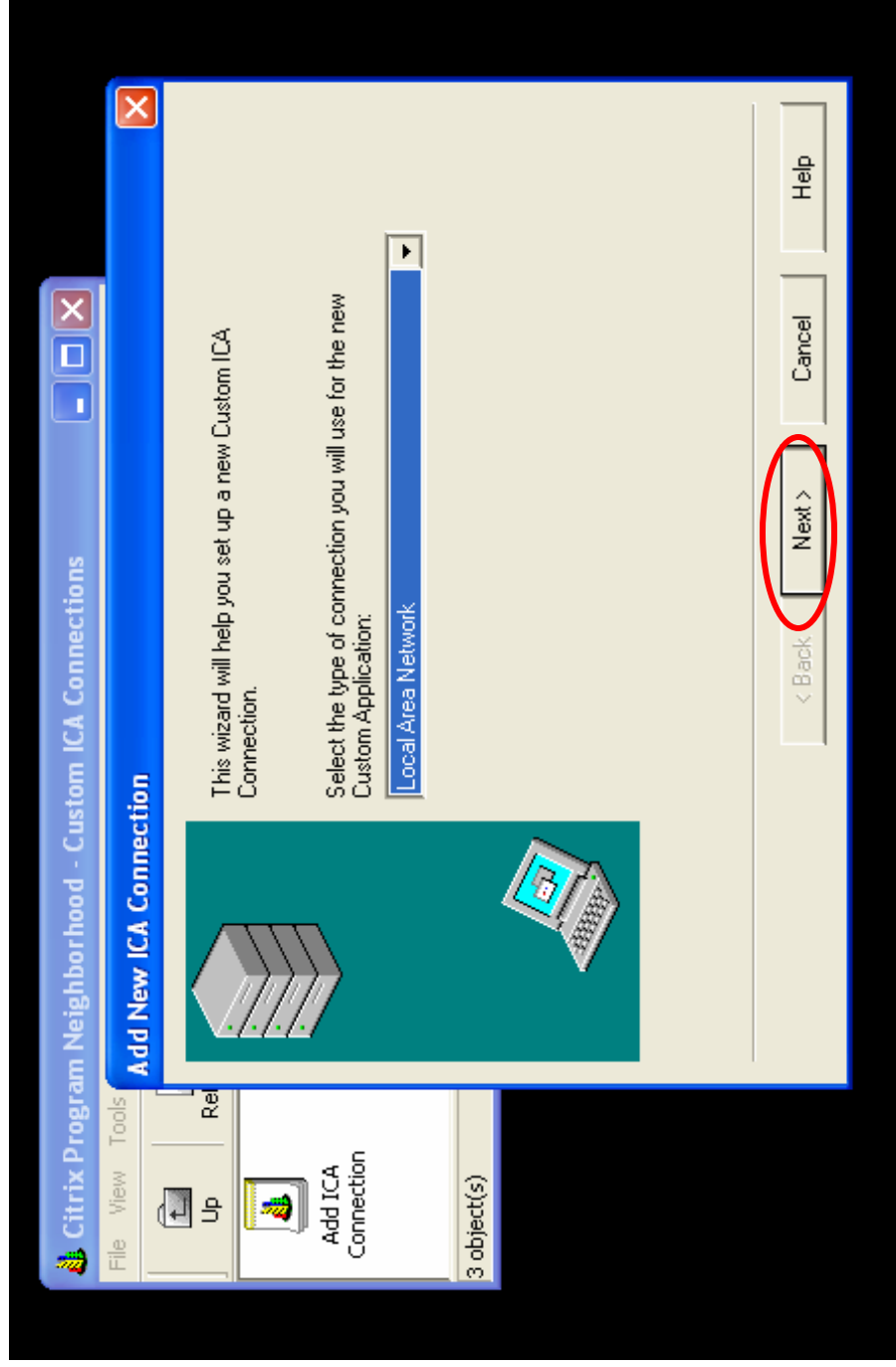
- Click on Add ICA Connection



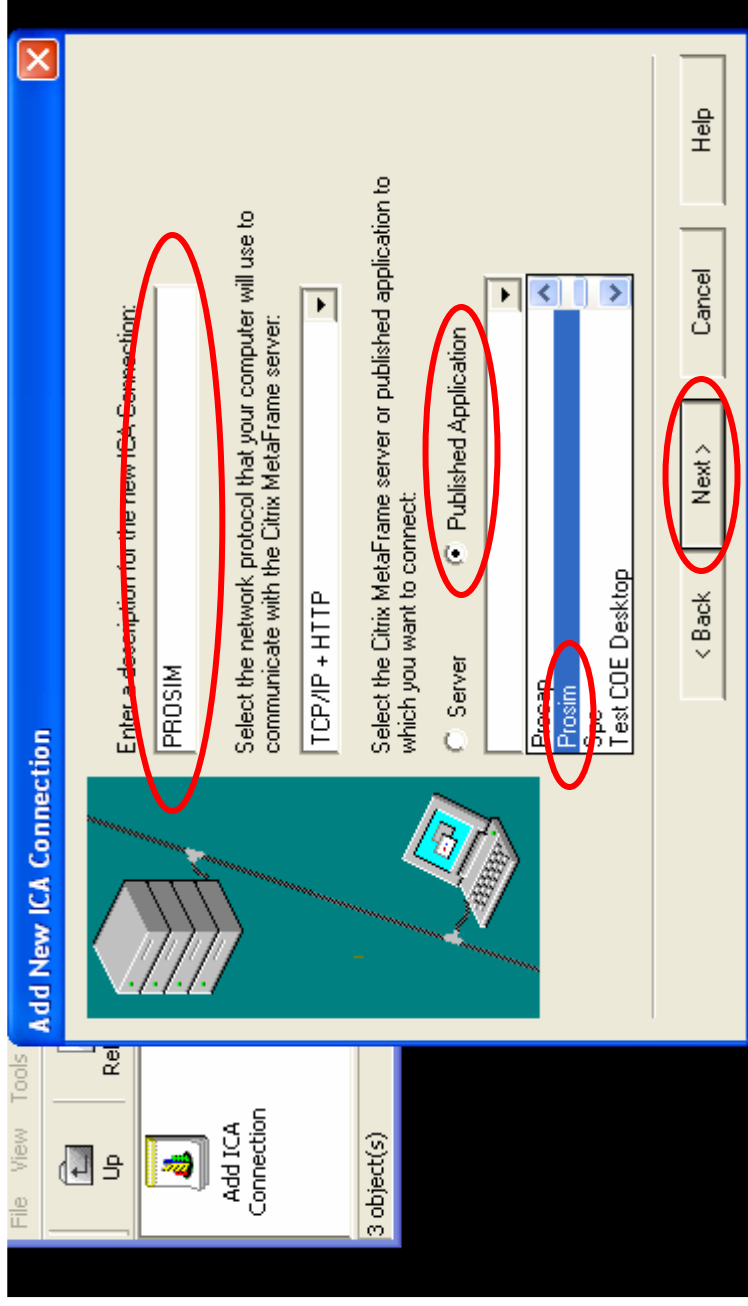
- This will open a new window to all a new ICA connection

- Type of Connection – Local Area Network

- Click Next

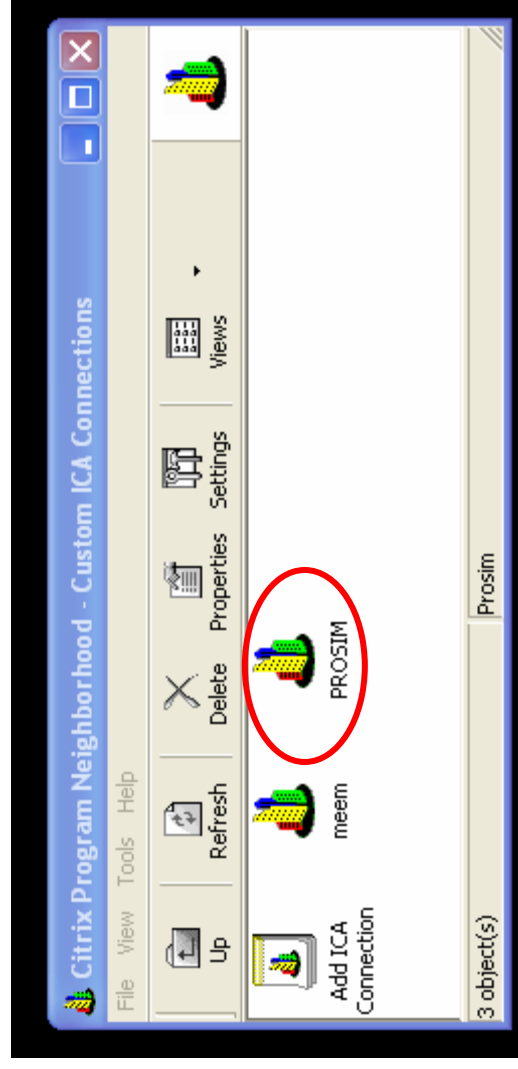


- Type the name of the connection



- Click on Published Application
- Scroll down to find the name of the software
- Click Next for the rest of the windows till you see Finish. Click Finish to complete the set-up

- Before you click on the new connection create a directory call “Quality” in your “H:\” drive
- Click on the connection and logon using your ISO password



- You can make similar connections for other software
  - XRCHRT
  - TURNSIM
  - PROCAP